

Aquis Exchange Monthly Statistics

Month: Mar-2019
 Total value traded (EUR): € 30,898,018,042
 Auction on Demand value traded (EUR): € 851,517,386

Monthly Top Stocks by Market Share (continuous trading)

Stock	Symbol	Market Share
Sofina SA	SOFb	11.8%
AP Moeller - Maersk A/S	MAERAc	11.3%
YIT OYJ	YITh	10.3%
Outotec OYJ	OTE1Vh	9.7%
AP Moeller - Maersk A/S	MAERBc	9.6%
Cargotec Oyj	CGCBVh	9.5%
Pandora A/S	PNDORc	8.4%
Kemira OYJ	KEMIRh	8.3%
Tieto OYJ	TIETOh	8.3%
SSAB AB	SSABAs	8.2%
Chr Hansen Holding A/S	CHRC	8.1%

Monthly Top Stocks by Value (EUR)

Stock	Symbol	Value Traded
Bayer AG	BAYNd	€ 202,907,990
Nestle SA	NESNz	€ 188,521,800
Novartis AG	NOVNz	€ 157,876,960
Total SA	FPp	€ 156,315,290
Roche Holding AG	ROGz	€ 142,839,520
Siemens AG	SIEd	€ 132,386,260
Deutsche Telekom AG	DTEd	€ 112,809,840
ASML Holding NV	ASMLa	€ 103,072,200
SAP AG	SAPd	€ 93,550,330
Nokia OYJ	NOKIAh	€ 89,851,840
Airbus	AIRp	€ 88,961,160
Allianz SE	ALVd	€ 84,273,620
Sanofi	SANp	€ 72,929,450
Rio Tinto PLC	RIOI	€ 72,638,550
Eni SpA	ENIm	€ 71,023,490



UK Top Stocks

Stock	Symbol	Market Share
DCC Plc	DCCI	7.5%
Old Mutual Limited	OMUI	7.2%
Schroders PLC	SDRI	7.1%
WM Morrison Supermarkets PLC	MRWI	6.9%
Halma PLC	HLMAl	6.8%



Italian Top Stocks

Stock	Symbol	Market Share
Bper Banca	BPEm	7.7%
A2A SpA	A2Am	7.4%
Atlantia SpA	ATLm	7.0%
Davide Campari-Milano SpA	CPRm	6.9%
Pirelli and C SpA	PIRCm	6.5%



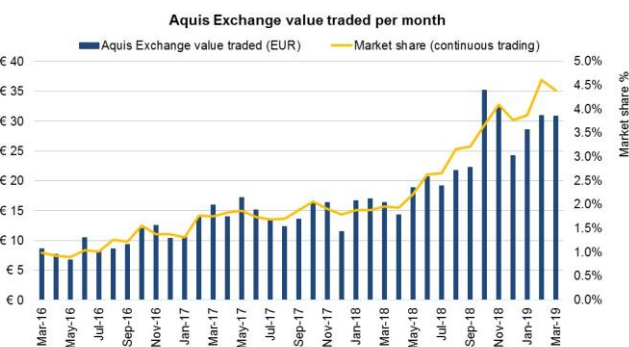
Swedish Top Stocks

Stock	Symbol	Market Share
SSAB AB	SSABAs	8.2%
Swedish Match AB	SWMAs	7.6%
Atlas Copco AB	ATCOBs	7.6%
Getinge AB	GETIBs	7.1%
Atlas Copco AB	ATCOAs	7.1%



French Top Stocks

Stock	Symbol	Market Share
Cappemini SA	CAPP	7.0%
Orange SA	ORAp	6.4%
Pernod-Ricard SA	Rlp	6.3%
Carrefour SA	CAp	5.8%
Air Liquide SA	Alp	5.5%



Trading by Market

Market	Value Traded
London	€ 5,755,000,040
Frankfurt	€ 5,396,603,080
Paris	€ 5,086,893,000
Zurich	€ 3,901,569,020
Milan	€ 2,348,176,450
Stockholm	€ 1,935,692,480
Amsterdam	€ 1,830,256,580
Madrid	€ 1,341,543,780
Copenhagen	€ 887,958,080
Helsinki	€ 832,281,420
Brussels	€ 631,183,190
Oslo	€ 515,291,190
London IDR	€ 315,618,100
Lisbon	€ 120,131,940
Vienna	€ 99,917,600



German Top Stocks

Stock	Symbol	Market Share
Siemens AG	SIEd	6.2%
HeidelbergCement AG	HEId	6.0%
Deutsche Telekom AG	DTEd	5.9%
Deutsche Post AG	DPWd	5.1%
Bayer AG	BAYNd	5.1%



Swiss Top Stocks

Stock	Symbol	Market Share
Geberit AG	GEbNz	7.4%
Cie Financiere Richemont SA	CFRz	6.6%
Givaudan SA	GIVNz	6.5%
Nestle SA	NESNz	5.8%
Roche Holding AG	ROGz	5.7%



Spanish Top Stocks

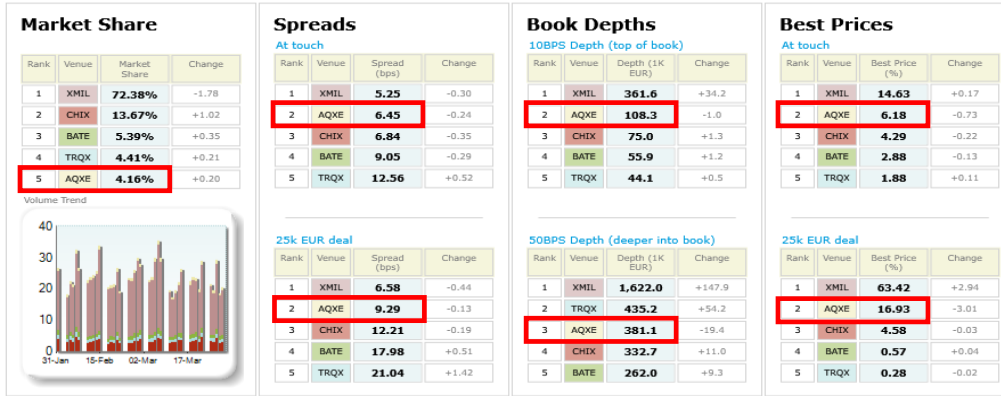
Stock	Symbol	Market Share
Viscofan SA	VISe	7.2%
Telefonica SA	TEFe	6.2%
Siemens Gamesa Renewable Energy	SGREe	6.1%
Amadeus IT Holding SA	AMSe	5.9%
Aena SME	AENaE	5.6%



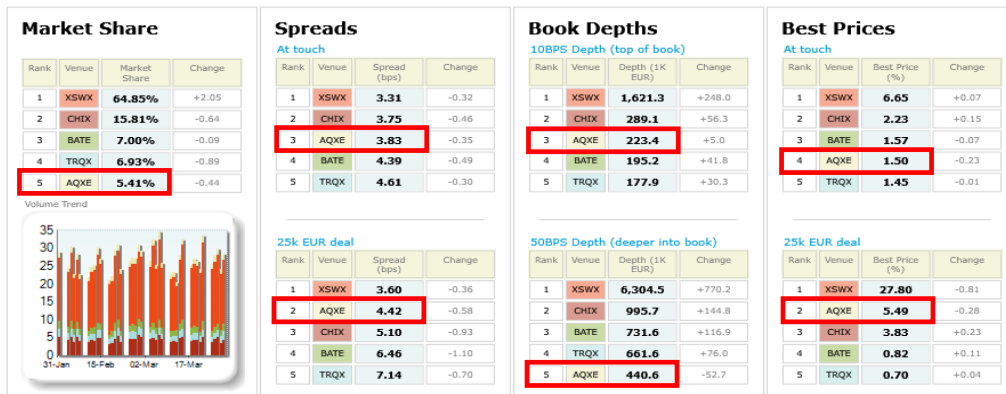
Danish Top Stocks

Stock	Symbol	Market Share
AP Moeller - Maersk A/S	MAERAc	11.3%
AP Moeller - Maersk A/S	MAERBc	9.6%
Pandora A/S	PNDORc	8.4%
Chr Hansen Holding A/S	CHRC	8.1%
GN Store Nord A/S	GNc	7.4%

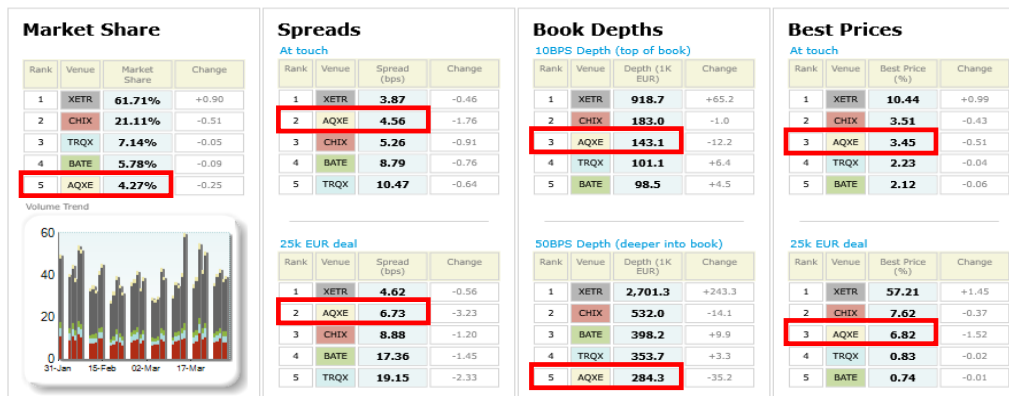
Italian 40 LiquidMetrix Battlemat*



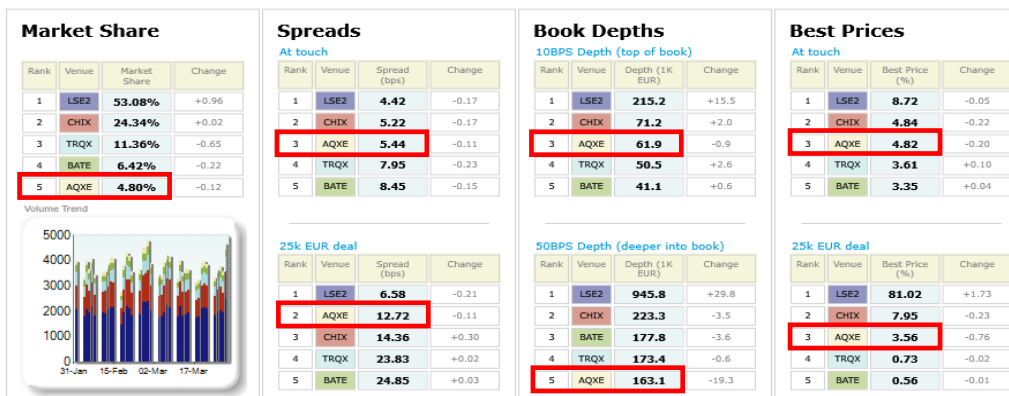
Swiss 20 LiquidMetrix Battlemat*



German 30 LiquidMetrix Battlemat*



UK 100 LiquidMetrix Battlemat*



Italian 40 LiquidMetrix Battlemat*

Percentage Best Price Analysis (Touch Prices)

Venue	Best Bid Price	Equal Best Bid Price	Not Best Bid Price	Best Ask Price	Equal Best Ask Price	Not Best Ask Price
AQXE	6.22%	57.35%	36.43%	6.14%	58.07%	35.79%
BATE	2.80%	34.48%	62.72%	2.96%	35.70%	61.34%
CHIX	4.28%	48.60%	47.11%	4.30%	49.39%	46.31%
TRQX	1.88%	18.54%	79.58%	1.87%	19.12%	79.01%
XMIL	14.95%	62.01%	23.05%	14.31%	62.25%	23.44%

Swiss 20 LiquidMetrix Battlemat*

Percentage Best Price Analysis (Touch Prices)

Venue	Best Bid Price	Equal Best Bid Price	Not Best Bid Price	Best Ask Price	Equal Best Ask Price	Not Best Ask Price
AQXE	1.47%	73.08%	25.45%	1.53%	73.57%	24.90%
BATE	1.57%	60.94%	37.48%	1.57%	60.62%	37.81%
CHIX	2.36%	74.05%	23.59%	2.11%	73.59%	24.31%
TRQX	1.42%	60.58%	37.99%	1.48%	60.62%	37.91%
XSWX	6.51%	79.46%	14.04%	6.78%	79.56%	13.66%

German 30 LiquidMetrix Battlemat*

Percentage Best Price Analysis (Touch Prices)

Venue	Best Bid Price	Equal Best Bid Price	Not Best Bid Price	Best Ask Price	Equal Best Ask Price	Not Best Ask Price
AQXE	3.35%	62.88%	33.77%	3.56%	62.90%	33.54%
BATE	2.07%	38.29%	59.64%	2.17%	38.54%	59.29%
CHIX	3.47%	62.60%	33.93%	3.54%	62.74%	33.72%
TRQX	2.26%	36.30%	61.44%	2.20%	37.03%	60.77%
XETR	10.74%	70.31%	18.94%	10.13%	70.14%	19.73%

UK 100 LiquidMetrix Battlemat*

Percentage Best Price Analysis (Touch Prices)

Venue	Best Bid Price	Equal Best Bid Price	Not Best Bid Price	Best Ask Price	Equal Best Ask Price	Not Best Ask Price
AQXE	4.68%	55.12%	40.19%	4.95%	55.72%	39.33%
BATE	3.35%	27.87%	68.78%	3.35%	27.92%	68.73%
CHIX	4.76%	59.17%	36.07%	4.91%	59.14%	35.94%
LSE2	8.88%	65.96%	25.16%	8.57%	65.40%	26.03%
TRQX	3.63%	35.21%	61.16%	3.58%	35.48%	60.94%

LiquidMetrix definitions:

- **Market share** is based on on-book value traded during continuous trading (excluding auctions). The share is calculated by averaging over all stocks in the index.
- **Spreads** measure the bid to offer spread of the best visible orders in the book. The result is averaged over the stocks in the index and is based on measurements of the order book every 30 seconds. The value for the spread is quoted in basis points (0.01%).
- **Market depth** measures the amount of visible liquidity (bids and offers) in the order book within 10 and 50 BPS of mid price. The result is averaged over the stocks in the index and is based on measurements of the order book every 30 seconds. This is quoted in '000s of EUR.
- **Best Price %** measures how often each venue posts an absolute best price (no ties) for stocks. The result is averaged over the stocks in the index and is based on measurements of the order book every 5 seconds.
- **Equal Best Price %** shows the percentage of time that each venue had an equal best bid or equal best offer price. The stats are based on full-depth order books taken

LiquidMetrix
Best Execution, Quantified

AQUIS
EXCHANGE

*Statistics relating to spreads and book depths have been sourced from LiquidMetrix.

© Aquis Exchange PLC 2019. Aquis Exchange PLC is authorised and regulated by the Financial Conduct Authority.

This report is for general information only and does not constitute investment advice or an offer, solicitation or recommendation to acquire or dispose of any investment or to engage in any other transaction. Although care is taken to ensure that the information is accurate and up to date, Aquis cannot accept any responsibility for mistakes or omissions.