

## Aquis Exchange Monthly Statistics

Month: Feb-2019  
 Total value traded (EUR): € 30,988,416,987  
 Auction on Demand value traded (EUR): € 879,680,999

### Monthly Top Stocks by Market Share (continuous trading)

Stock	Symbol	Market Share
Sofina SA	SOFb	10.9%
Gjensidige Forsikring ASA	GJFo	10.3%
Kemira OYJ	KEMIRh	10.2%
Cargotec Oyj	CGCBVh	10.1%
DCC Plc	DCCI	9.3%
Outokumpu OYJ	OUT1Vh	9.2%
Buzzi Unicem SpA	BZUm	8.7%
Aker Solutions ASA	AKSOo	8.6%
A2A SpA	A2Am	8.5%
Outotec OYJ	OTE1Vh	8.4%
Sampo	SAMPOh	8.4%

### Monthly Top Stocks by Value (EUR)

Stock	Symbol	Value Traded
Nestle SA	NESNz	€ 376,722,000
Roche Holding AG	ROGz	€ 296,390,870
Novartis AG	NOVNz	€ 262,342,760
Wirecard AG	WDId	€ 249,600,110
Siemens AG	SIEd	€ 242,599,850
Deutsche Telekom AG	DTEd	€ 207,231,110
Total SA	FPp	€ 202,149,460
Daimler AG	DAId	€ 186,429,590
Airbus	AIRp	€ 180,681,730
UniCredit SpA	UCGm	€ 174,056,620
BP PLC	BPI	€ 172,544,810
Sanofi	SANp	€ 163,135,870
SAP AG	SAPd	€ 157,643,290
Nokia OYJ	NOKIAh	€ 151,339,550
Allianz SE	ALVd	€ 149,020,730



### UK Top Stocks

Stock	Symbol	Market Share
DCC Plc	DCCI	9.3%
Old Mutual Limited	OMUI	7.4%
Halma PLC	HLMAl	6.8%
Schroders PLC	SDRI	6.8%
Compass Group PLC	CPGI	6.5%



### Italian Top Stocks

Stock	Symbol	Market Share
Buzzi Unicem SpA	BZUm	8.7%
A2A SpA	A2Am	8.5%
Davide Campari-Milano SpA	CPRm	7.9%
Pirelli and C SpA	PIRCm	7.4%
Atlantia SpA	ATLm	7.3%



### Swedish Top Stocks

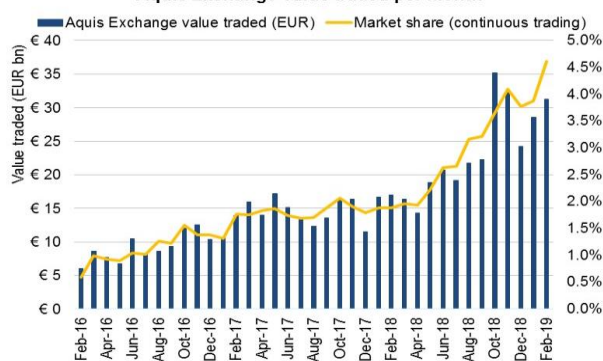
Stock	Symbol	Market Share
SSAB AB	SSABAs	7.4%
Tele2 AB	TEL2Bs	7.4%
Getinge AB	GETIBs	7.1%
Securitas AB	SECUBs	7.1%
Atlas Copco AB	ATCOAs	7.0%



### French Top Stocks

Stock	Symbol	Market Share
Carrefour SA	CAP	7.4%
Permod-Ricard SA	RIP	6.9%
Engie	ENGLp	6.7%
Orange SA	ORAP	6.6%
Air Liquide SA	ALP	6.6%

### Aquis Exchange value traded per month



### Trading by Market

Market	Value Traded
London	€ 5,652,416,200
Frankfurt	€ 5,327,880,570
Paris	€ 5,306,028,260
Zurich	€ 3,811,072,050
Stockholm	€ 2,275,720,090
Milan	€ 2,147,963,550
Amsterdam	€ 1,656,362,130
Madrid	€ 1,242,327,830
Copenhagen	€ 978,070,430
Helsinki	€ 955,937,480
Oslo	€ 684,937,690
Brussels	€ 521,883,490
London IDR	€ 328,627,700
Lisbon	€ 108,235,490
Vienna	€ 90,954,040



### German Top Stocks

Stock	Symbol	Market Share
Deutsche Telekom AG	DTEd	7.1%
RWE AG	RWEEd	6.0%
Deutsche Boerse AG	DB1d	5.9%
HeidelbergCement AG	HEId	5.6%
Siemens AG	SIEd	5.6%



### Swiss Top Stocks

Stock	Symbol	Market Share
Geberit AG	GEBNz	7.4%
SGS SA	SGSNz	7.2%
Lonza Group AG	LONNz	6.9%
Givaudan SA	GIVNz	6.8%
Nestle SA	NESNz	6.3%



### Spanish Top Stocks

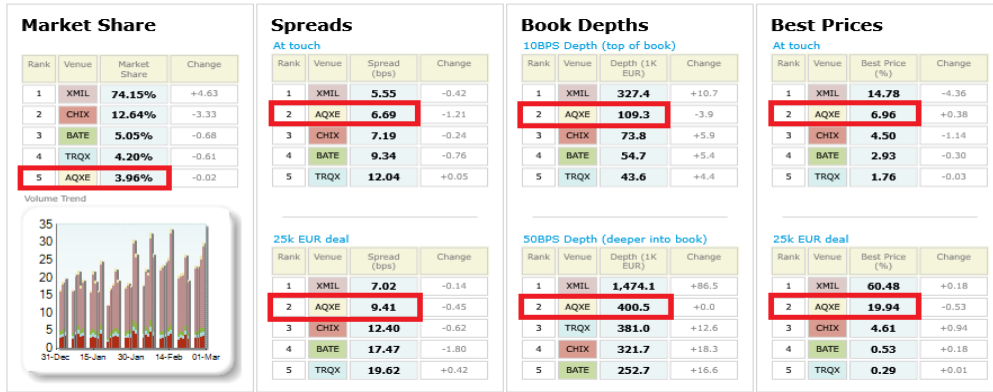
Stock	Symbol	Market Share
Viscofan SA	VISe	8.2%
Amadeus IT Holding SA	AMSe	7.0%
Aena SME	AENAE	6.9%
Endesa SA	ELEe	6.6%
Mediaset Espana Comunicacion SA	TL5e	6.3%



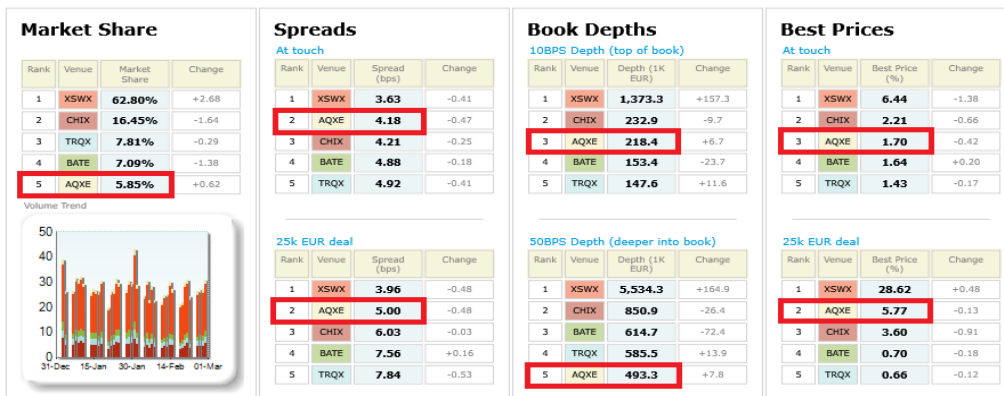
### Danish Top Stocks

Stock	Symbol	Market Share
ISS A/S	ISSc	7.2%
GN Store Nord A/S	GNc	7.2%
Coloplast A/S	COLOBc	7.2%
Jyske Bank A/S	JYSKc	7.1%
Carlsberg A/S	CARLBC	6.6%

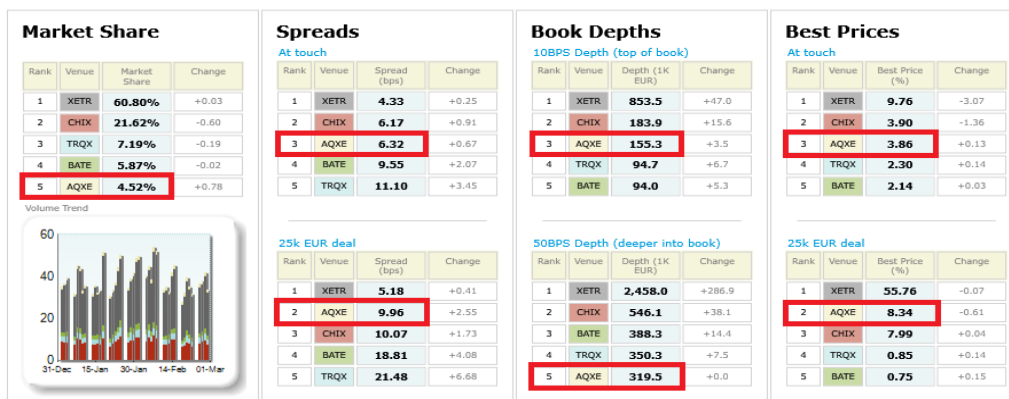
Italian 40 LiquidMetrix Battlemat\*



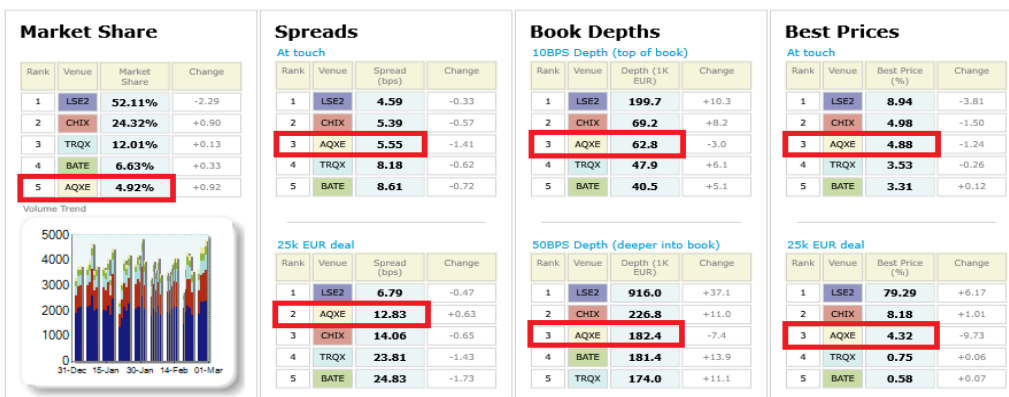
Swiss 20 LiquidMetrix Battlemat\*



German 30 LiquidMetrix Battlemat\*



UK 100 LiquidMetrix Battlemat\*



## Italian 40 LiquidMetrix Battlemat\*

### Percentage Best Price Analysis (Touch Prices)

Venue	Best Bid Price	Equal Best Bid Price	Not Best Bid Price	Best Ask Price	Equal Best Ask Price	Not Best Ask Price
AQXE	7.00%	57.40%	35.60%	6.91%	57.12%	35.97%
BATE	2.72%	34.24%	63.04%	3.13%	35.13%	61.74%
CHIX	4.38%	46.94%	48.68%	4.63%	47.29%	48.09%
TRQX	1.74%	18.33%	79.93%	1.79%	18.58%	79.63%
XMIL	15.09%	61.18%	23.73%	14.47%	60.61%	24.92%

## Swiss 20 LiquidMetrix Battlemat\*

### Percentage Best Price Analysis (Touch Prices)

Venue	Best Bid Price	Equal Best Bid Price	Not Best Bid Price	Best Ask Price	Equal Best Ask Price	Not Best Ask Price
AQXE	1.67%	74.34%	23.99%	1.73%	74.05%	24.21%
BATE	1.61%	61.15%	37.24%	1.67%	60.40%	37.93%
CHIX	2.19%	73.33%	24.48%	2.23%	73.33%	24.44%
TRQX	1.44%	62.01%	36.55%	1.42%	60.81%	37.77%
XSWX	6.45%	79.42%	14.12%	6.42%	79.11%	14.47%

## German 30 LiquidMetrix Battlemat\*

### Percentage Best Price Analysis (Touch Prices)

Venue	Best Bid Price	Equal Best Bid Price	Not Best Bid Price	Best Ask Price	Equal Best Ask Price	Not Best Ask Price
AQXE	3.89%	64.04%	32.07%	3.82%	64.24%	31.94%
BATE	2.10%	37.76%	60.13%	2.17%	38.65%	59.18%
CHIX	3.85%	62.08%	34.07%	3.95%	63.20%	32.85%
TRQX	2.30%	36.30%	61.40%	2.30%	37.01%	60.70%
XETR	10.05%	69.76%	20.19%	9.46%	70.07%	20.47%

## UK 100 LiquidMetrix Battlemat\*

### Percentage Best Price Analysis (Touch Prices)

Venue	Best Bid Price	Equal Best Bid Price	Not Best Bid Price	Best Ask Price	Equal Best Ask Price	Not Best Ask Price
AQXE	4.77%	55.82%	39.42%	5.00%	55.75%	39.25%
BATE	3.29%	28.36%	68.34%	3.33%	28.65%	68.02%
CHIX	4.94%	59.16%	35.90%	5.02%	59.05%	35.93%
LSE2	9.12%	65.81%	25.07%	8.76%	65.11%	26.13%
TRQX	3.44%	35.53%	61.03%	3.63%	35.95%	60.42%

#### LiquidMetrix definitions:

- **Market share** is based on on-book value traded during continuous trading (excluding auctions). The share is calculated by averaging over all stocks in the index.
- **Spreads** measure the bid to offer spread of the best visible orders in the book. The result is averaged over the stocks in the index and is based on measurements of the order book every 30 seconds. The value for the spread is quoted in basis points (0.01%).
- **Market depth** measures the amount of visible liquidity (bids and offers) in the order book within 10 and 50 BPS of mid price. The result is averaged over the stocks in the index and is based on measurements of the order book every 30 seconds. This is quoted in '000s of EUR.
- **Best Price %** measures how often each venue posts an absolute best price (no ties) for stocks. The result is averaged over the stocks in the index and is based on measurements of the order book every 5 seconds.
- **Equal Best Price %** shows the percentage of time that each venue had an equal best bid or equal best offer price. The stats are based on full-depth order books taken

\*Statistics relating to spreads and book depths have been sourced from LiquidMetrix.