

Aquis Exchange Monthly Statistics

Month: Jan-2019
 Total value traded (EUR): € 28,557,596,344
 Auction on Demand value traded (EUR): € 1,421,540,909

Monthly Top Stocks by Market Share (continuous trading)

Stock	Symbol	Market Share
Sofina SA	SOFb	10.6%
Outokumpu OYJ	OUT1Vh	10.3%
Kemira OYJ	KEMIRh	9.2%
Buzzi Unicem SpA	BZUm	9.1%
AA PLC	AAI	8.6%
Norwegian Finans Holding ASA	NOFlo	8.1%
Davide Campari-Milano SpA	CPRm	8.0%
Gjensidige Forsikring ASA	GJFo	7.9%
YIT OYJ	YITh	7.8%
Outotec OYJ	OTE1Vh	7.7%
Cargotec Oyj	CGCBVh	7.7%

Monthly Top Stocks by Value (EUR)

Stock	Symbol	Value Traded
Roche Holding AG	ROGz	€ 569,534,030
Novartis AG	NOVNz	€ 473,027,050
Nestle SA	NESNz	€ 404,173,460
Deutsche Telekom AG	DTEd	€ 277,483,850
Wirecard AG	WDId	€ 222,696,610
Allianz SE	ALVd	€ 189,117,280
ASML Holding NV	ASMLa	€ 188,696,230
Airbus	AIRp	€ 187,170,610
Nokia OYJ	NOKIAh	€ 182,467,290
Bayer AG	BAYNd	€ 182,029,540
SAP AG	SAPd	€ 180,246,960
Daimler AG	DAId	€ 176,686,070
Total SA	FPP	€ 172,826,220
Adidas AG	ADSD	€ 170,685,140
UBS Group AG	UBSGz	€ 170,386,250



UK Top Stocks

Stock	Symbol	Market Share
AA PLC	AAI	8.6%
Halma PLC	HLMAl	7.6%
Old Mutual Limited	OMUI	6.8%
DCC Plc	DCCI	6.2%
Compass Group PLC	CPGI	5.9%



Italian Top Stocks

Stock	Symbol	Market Share
Buzzi Unicem SpA	BZUm	9.1%
Davide Campari-Milano SpA	CPRm	8.0%
Salvatore Ferragamo Italia SpA	SFERm	7.7%
Pirelli and C SpA	PIRCm	6.9%
A2A SpA	A2Am	6.9%



Swedish Top Stocks

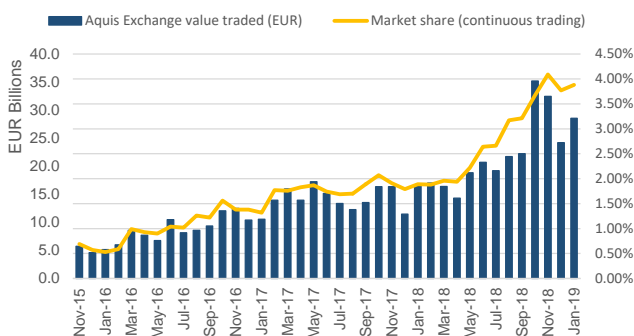
Stock	Symbol	Market Share
Securitas AB	SECUBs	6.2%
Swedish Match AB	SWMA s	5.9%
Essity Aktiebolag AB B	ESSIBs	5.9%
Tele2 AB	TEL2Bs	5.8%
Hennes and Mauritz AB	HMBs	5.4%



French Top Stocks

Stock	Symbol	Market Share
Safran SA	SAFP	6.1%
Pernod-Ricard SA	RIP	5.9%
Air Liquide SA	Alp	5.6%
Orange SA	ORAp	5.5%
Vivendi SA	VIVp	5.4%

Aquis Exchange value traded per month



Trading by Market

Market	Value Traded
London	€ 5,225,543,090
Frankfurt	€ 5,076,640,500
Paris	€ 4,422,673,440
Zurich	€ 4,139,226,190
Milan	€ 1,875,722,880
Stockholm	€ 1,807,171,270
Amsterdam	€ 1,480,570,700
Madrid	€ 1,169,655,070
Copenhagen	€ 945,474,900
Helsinki	€ 817,926,840
Oslo	€ 676,416,130
Brussels	€ 483,942,250
London IDR	€ 314,431,290
Lisbon	€ 128,074,310
Vienna	€ 94,126,830



German Top Stocks

Stock	Symbol	Market Share
Deutsche Boerse AG	DB1d	6.0%
Deutsche Post AG	DPWd	5.5%
Deutsche Telekom AG	DTEd	5.4%
RWE AG	RWE d	4.6%
HeidelbergCement AG	HEId	4.3%



Swiss Top Stocks

Stock	Symbol	Market Share
Givaudan SA	GIVNz	7.0%
Roche Holding AG	ROGz	6.4%
Swiss Re AG	SRENz	6.0%
Novartis AG	NOVNz	5.8%
SGS SA	SGSNz	5.5%



Spanish Top Stocks

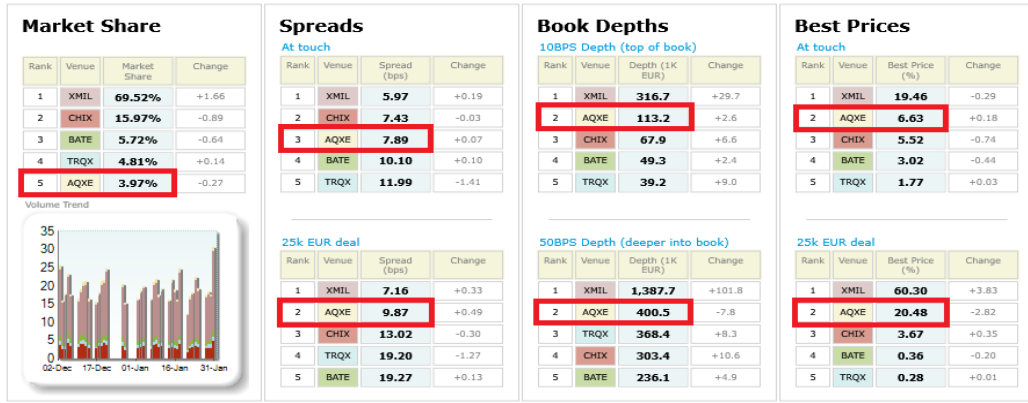
Stock	Symbol	Market Share
Viscofan SA	VISe	6.9%
Mediaset Espana Comunicacion SA	TL5e	5.4%
Iberdrola SA	IBEe	5.1%
Amadeus IT Holding SA	AMSe	5.0%
Siemens Gamesa Renewable Energy	SGREe	4.9%



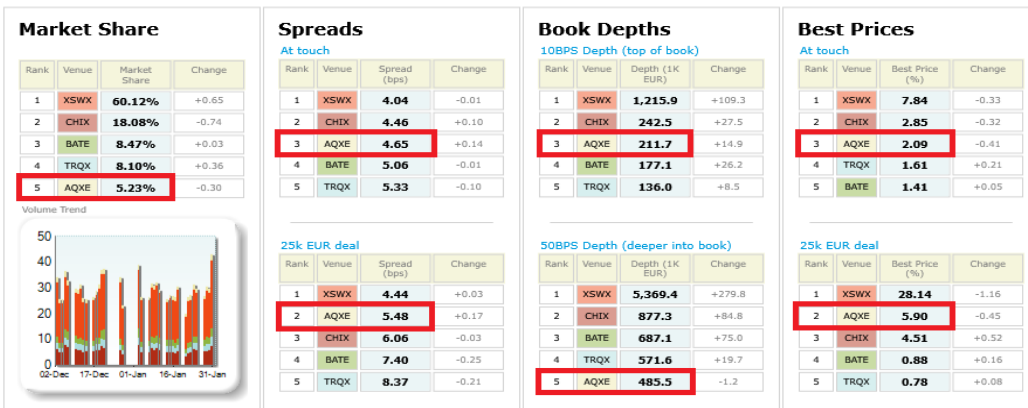
Danish Top Stocks

Stock	Symbol	Market Share
AP Moeller - Maersk A/S	MAERBc	7.1%
ISS A/S	ISSc	7.1%
Carlsberg A/S	CARLBc	6.4%
GN Store Nord A/S	GNc	6.4%
DSV A/S	DSVc	6.0%

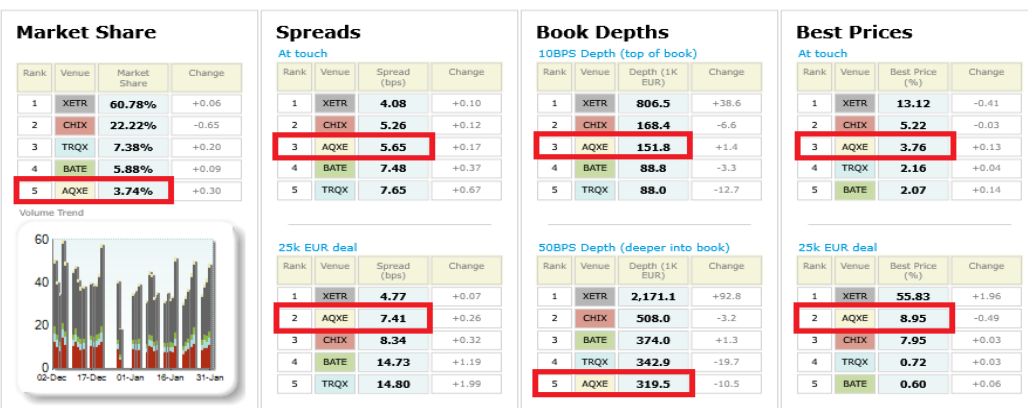
Italian 40 LiquidMetrix Battlemat*



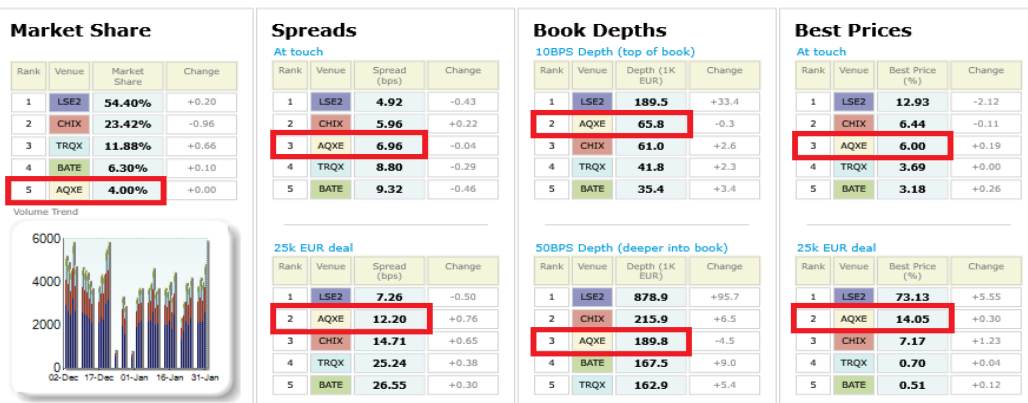
Swiss 20 LiquidMetrix Battlemat*



German 30 LiquidMetrix Battlemat*



UK 100 LiquidMetrix Battlemat*



Italian 40 LiquidMetrix Battlemap*

Percentage Best Price Analysis (Touch Prices)

Venue	Best Bid Price	Equal Best Bid Price	Not Best Bid Price	Best Ask Price	Equal Best Ask Price	Not Best Ask Price
AQXE	6.55%	47.16%	46.29%	6.71%	47.14%	46.15%
BATE	2.83%	31.23%	65.94%	3.22%	32.03%	64.74%
CHIX	5.65%	43.96%	50.39%	5.38%	43.74%	50.88%
TRQX	1.84%	15.81%	82.35%	1.70%	16.11%	82.19%
XMIL	19.59%	55.60%	24.81%	19.32%	55.42%	25.26%

Swiss 20 LiquidMetrix Battlemap*

Percentage Best Price Analysis (Touch Prices)

Venue	Best Bid Price	Equal Best Bid Price	Not Best Bid Price	Best Ask Price	Equal Best Ask Price	Not Best Ask Price
AQXE	1.98%	67.27%	30.75%	2.21%	68.00%	29.80%
BATE	1.39%	64.63%	33.98%	1.42%	64.53%	34.04%
CHIX	2.84%	74.32%	22.84%	2.86%	74.49%	22.65%
TRQX	1.60%	61.43%	36.97%	1.62%	61.18%	37.20%
XSWX	8.01%	76.92%	15.07%	7.66%	76.59%	15.75%

German 30 LiquidMetrix Battlemap*

Percentage Best Price Analysis (Touch Prices)

Venue	Best Bid Price	Equal Best Bid Price	Not Best Bid Price	Best Ask Price	Equal Best Ask Price	Not Best Ask Price
AQXE	3.79%	53.63%	42.58%	3.74%	53.72%	42.54%
BATE	2.08%	37.08%	60.84%	2.05%	37.04%	60.90%
CHIX	5.21%	61.46%	33.32%	5.22%	61.14%	33.64%
TRQX	2.11%	37.55%	60.34%	2.21%	38.28%	59.51%
XETR	13.14%	65.88%	20.99%	13.10%	65.96%	20.94%

UK 100 LiquidMetrix Battlemap*

Percentage Best Price Analysis (Touch Prices)

Venue	Best Bid Price	Equal Best Bid Price	Not Best Bid Price	Best Ask Price	Equal Best Ask Price	Not Best Ask Price
AQXE	5.90%	41.81%	52.28%	6.10%	42.48%	51.42%
BATE	3.19%	26.45%	70.35%	3.16%	26.47%	70.37%
CHIX	6.46%	54.56%	38.98%	6.41%	54.48%	39.11%
LSE2	13.05%	60.20%	26.75%	12.80%	60.13%	27.07%
TRQX	3.71%	33.57%	62.72%	3.68%	33.95%	62.37%

LiquidMetrix definitions:

- **Market share** is based on on-book value traded during continuous trading (excluding auctions). The share is calculated by averaging over all stocks in the index.
- **Spreads** measure the bid to offer spread of the best visible orders in the book. The result is averaged over the stocks in the index and is based on measurements of the order book every 30 seconds. The value for the spread is quoted in basis points (0.01%).
- **Market depth** measures the amount of visible liquidity (bids and offers) in the order book within 10 and 50 BPS of mid price. The result is averaged over the stocks in the index and is based on measurements of the order book every 30 seconds. This is quoted in '000s of EUR.
- **Best Price** % measures how often each venue posts an absolute best price (no ties) for stocks. The result is averaged over the stocks in the index and is based on measurements of the order book every 5 seconds.
- **Equal Best Price** % shows the percentage of time that each venue had an equal best bid or equal best offer price. The stats are based on full-depth order books taken

*Statistics relating to spreads and book depths have been sourced from LiquidMetrix.